



Responsible Forest Management

Tim Crowley
Managing Director
Coillte Forest



6 October 2009

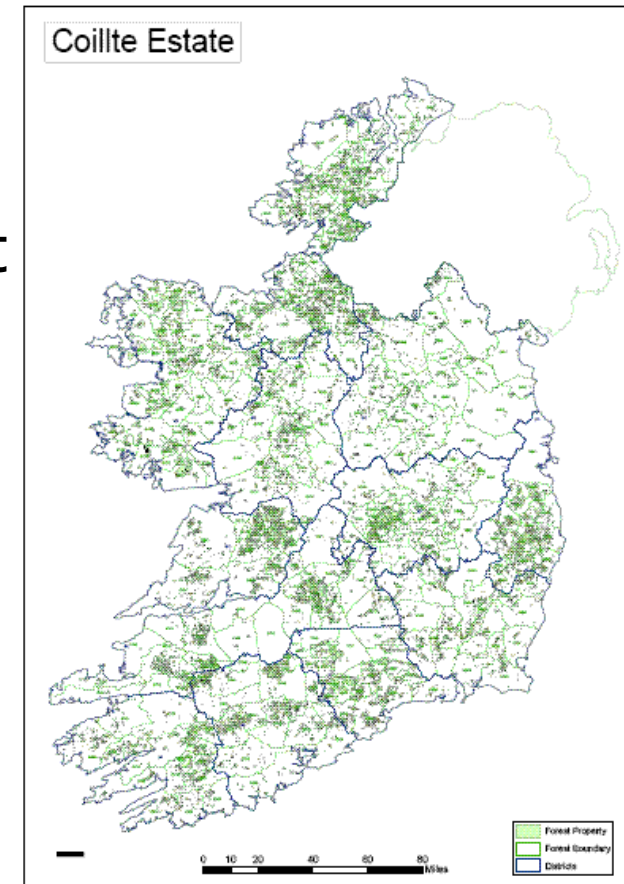
LIFE05 NAT/IRL/000182
www.woodlandrestoration.ie

1



Coillte

- Forestry business
 - responsible forest management
- Enterprises
 - sustainable energy wind farms
 - land based businesses
- Added value wood products
 - Coillte Panel Products





Coillte's vision

**...to enrich lives locally, nationally
and globally through innovative and
sustainable management of natural
resources.**





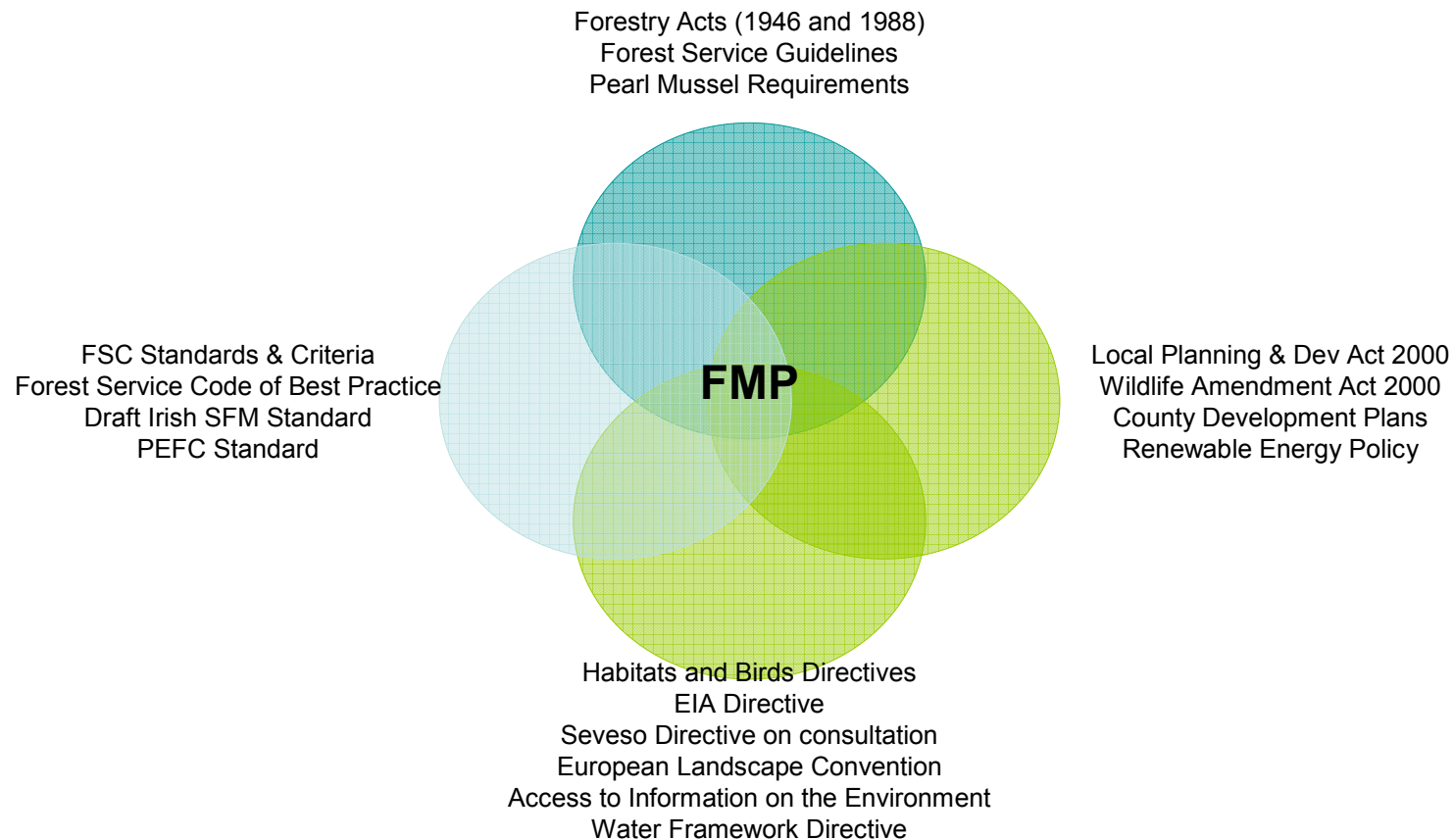
Coillte Estate

- Manages 445,000 hectares of land (7% of Ireland)
 - 80% (352,000 ha) is under forest
 - remainder comprised of open land & water
- Fragmented Estate
 - 5,400 properties
 - 10,363 entrances
- 18 million visitors to our forests annually
- 400 lorry loads of timber leave our forest daily
- Lands suitable to meet National Infrastructure requirements



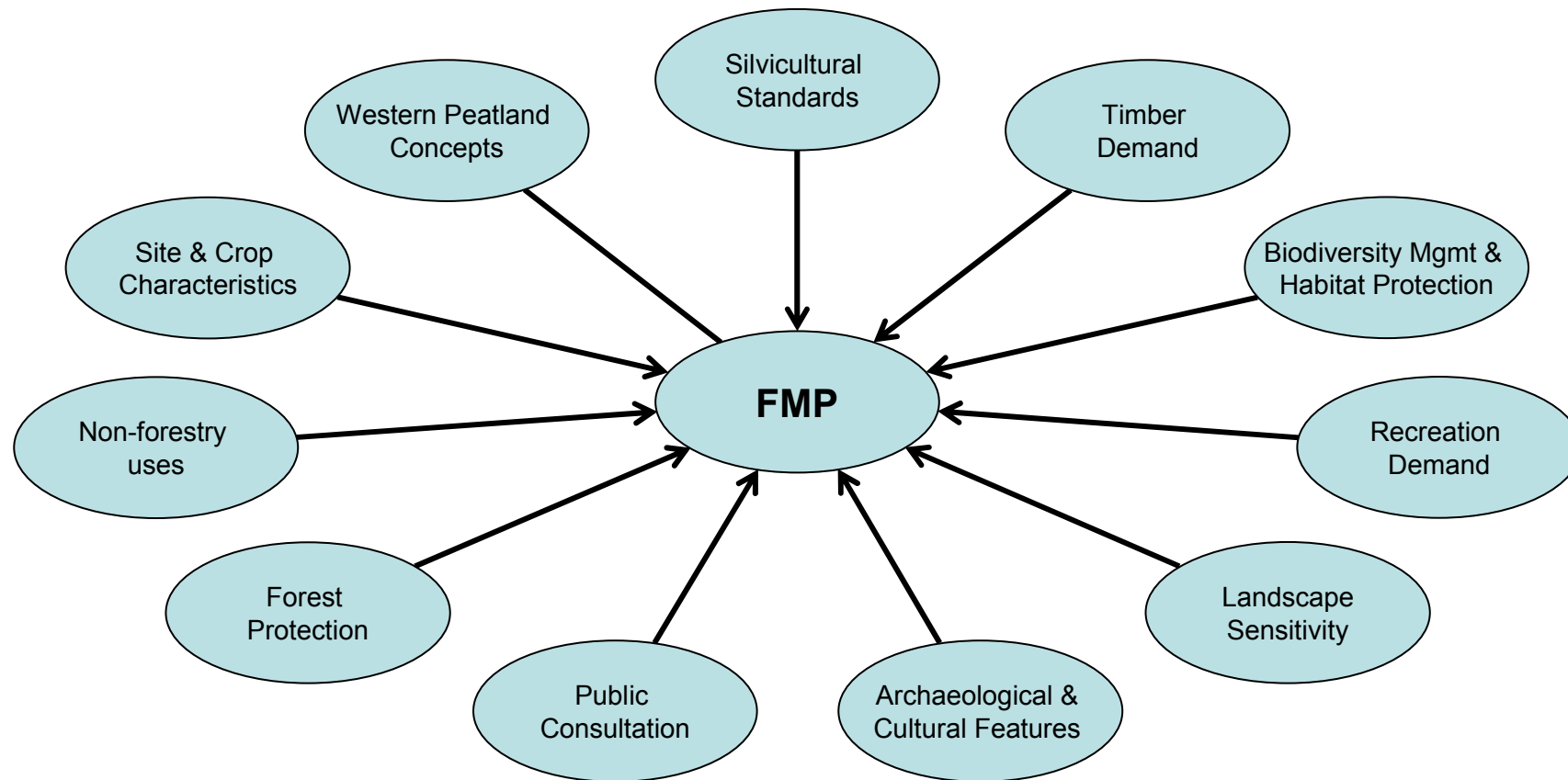


Regulatory Framework





Multi-objective Resource Management



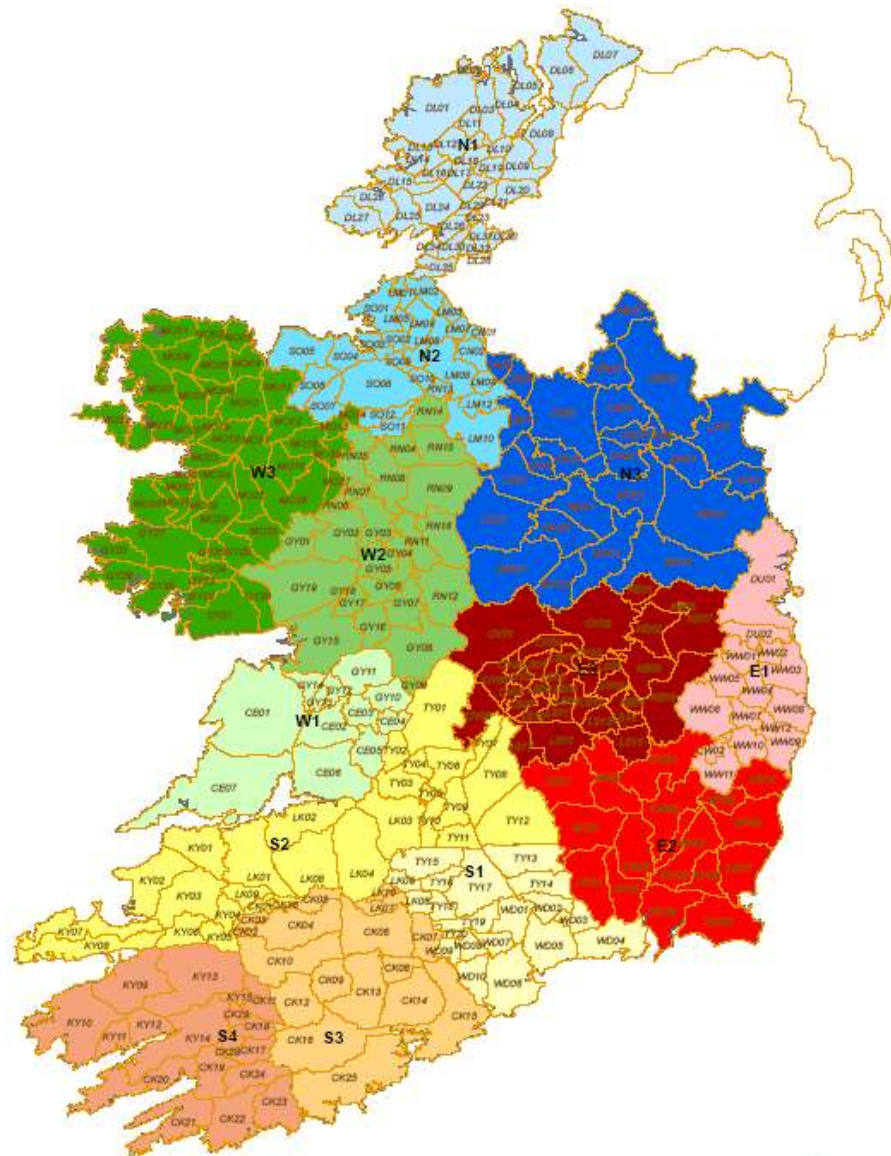


Forest Management Planning Process

- The forest management planning process is the implementation of all relevant area base plans including for example
- Restructuring plans
 - Landscape design plans
 - Species diversification policies
 - Deer management plans
 - Silviculture system



Districts and Forest Boundaries



coillte

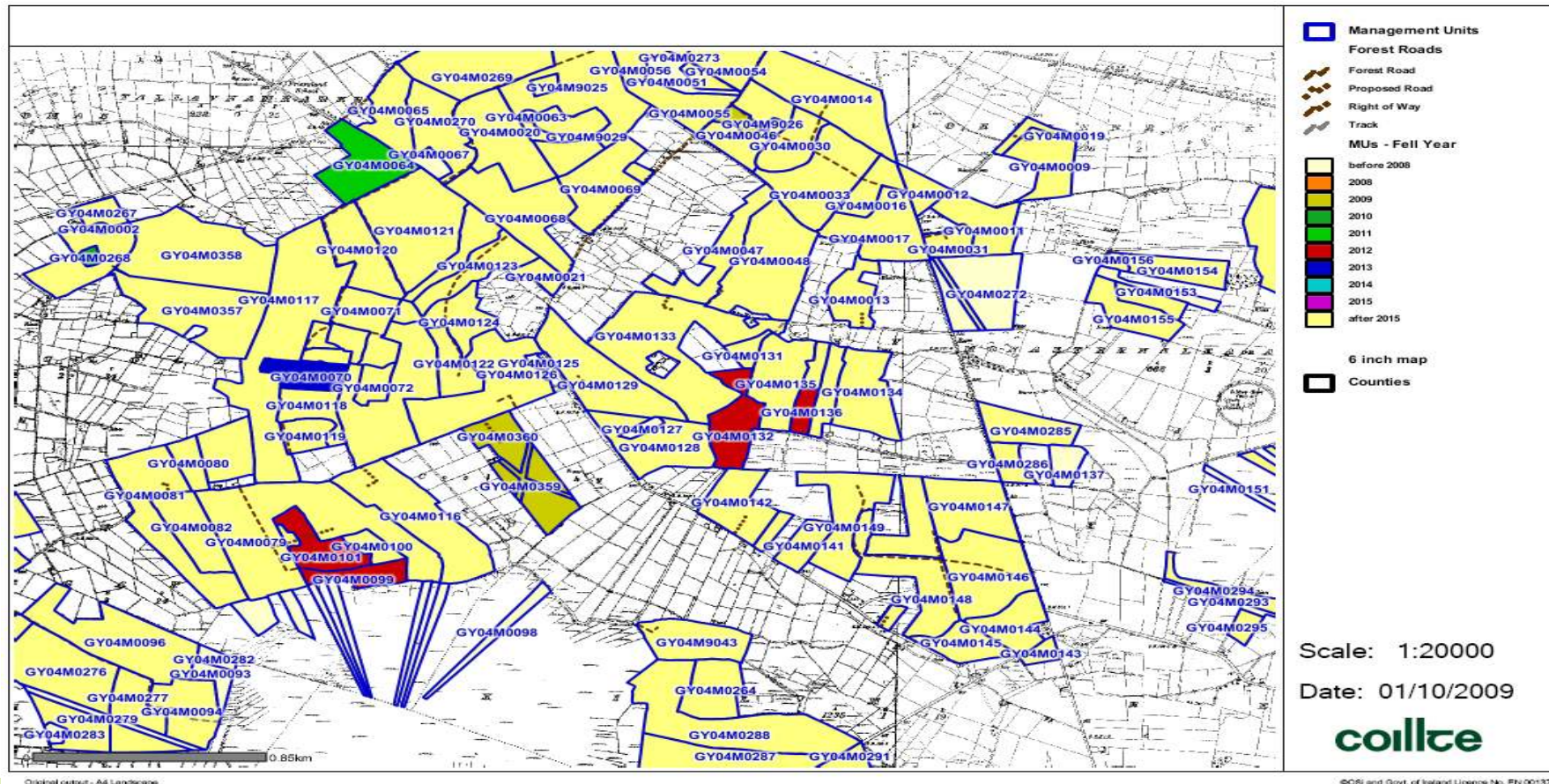


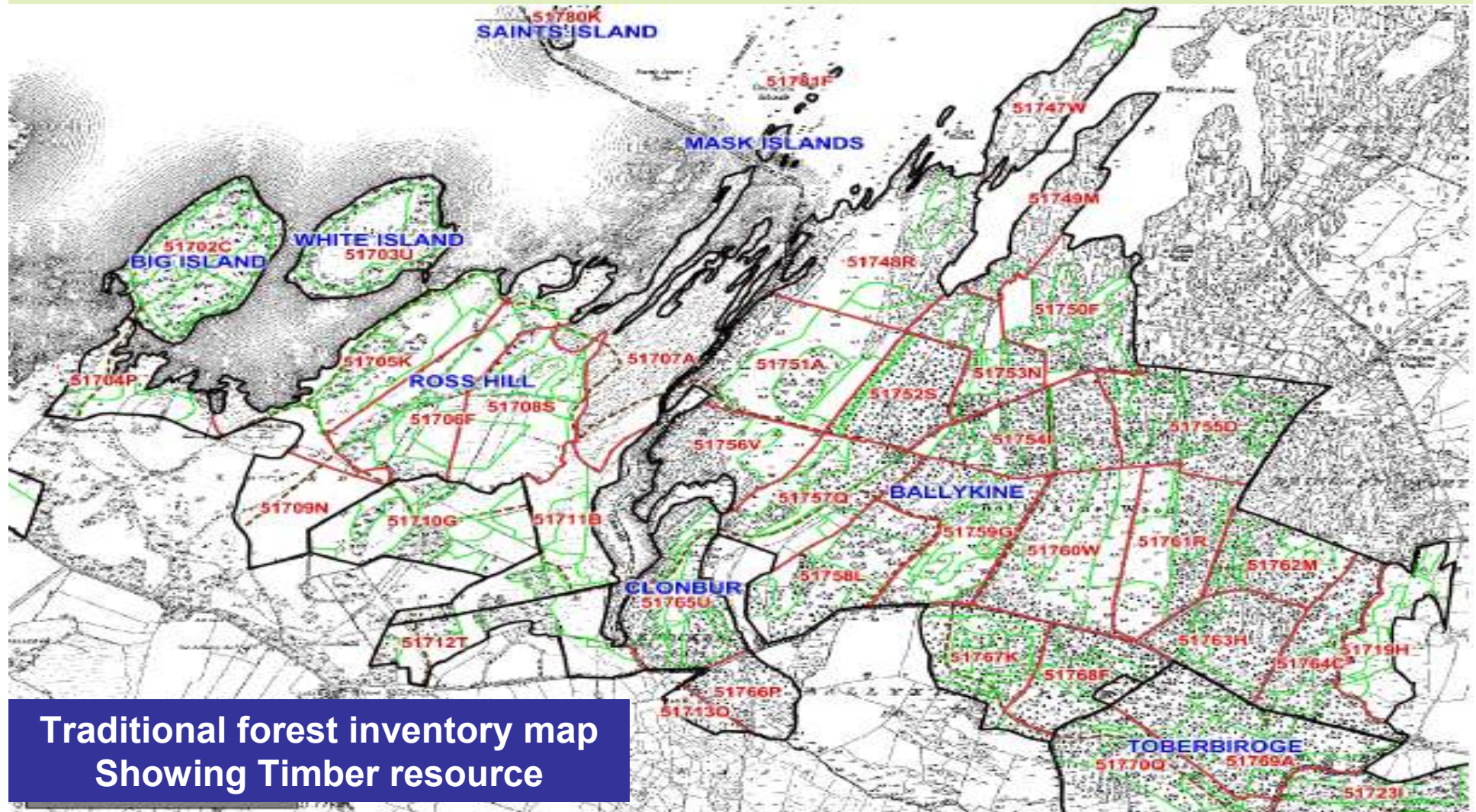
6 October 2009

8

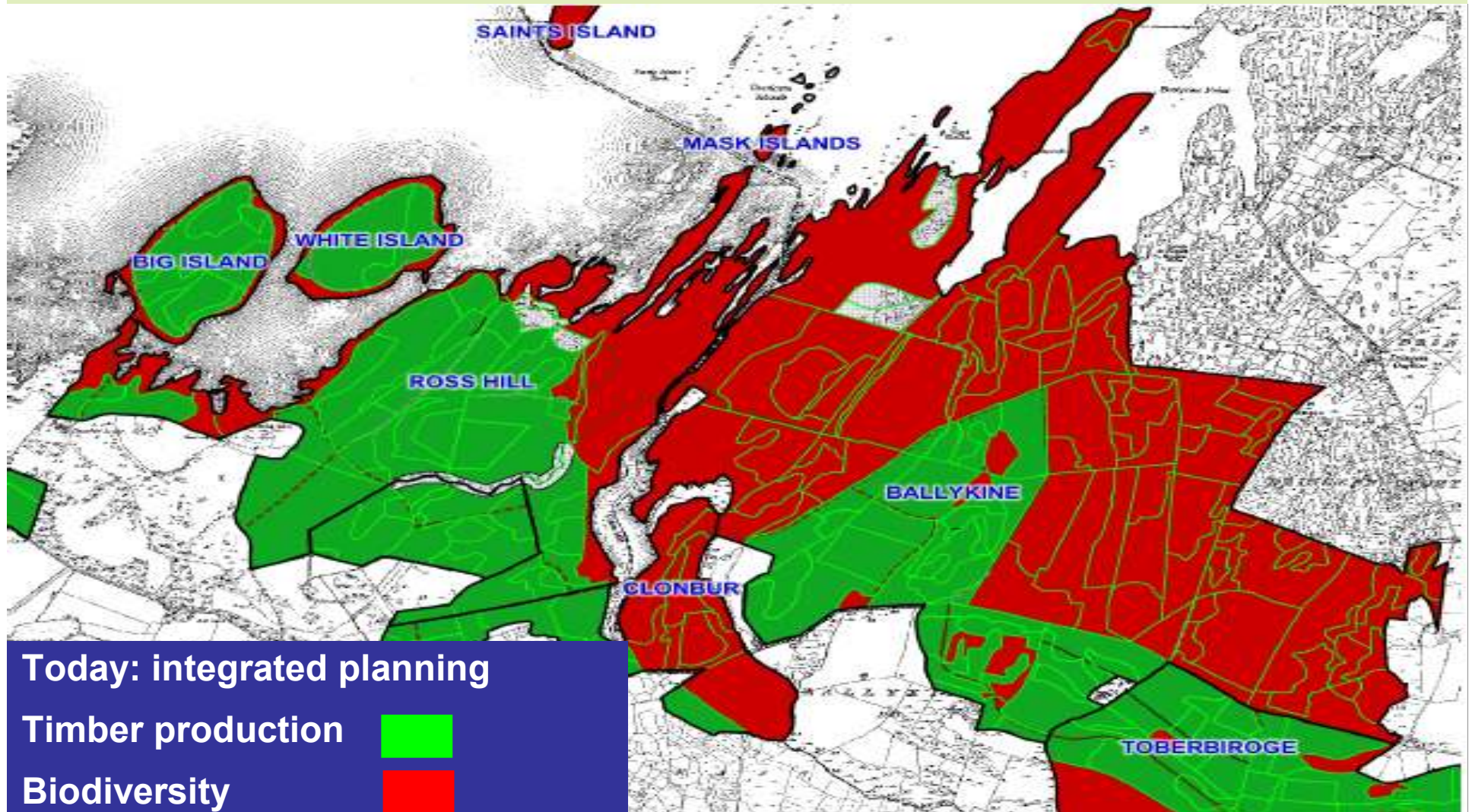


Management Units



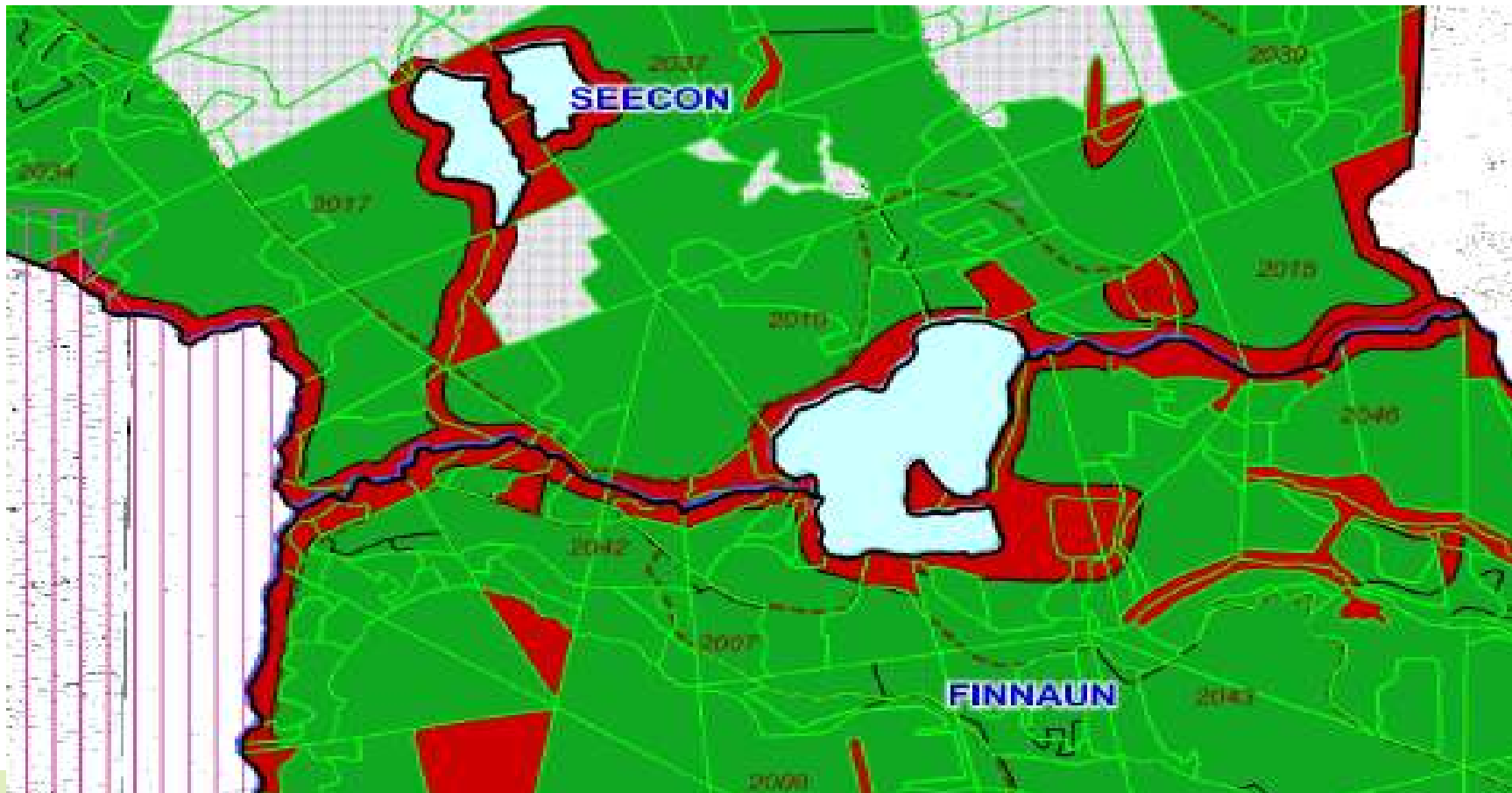


**Traditional forest inventory map
Showing Timber resource**





Buffer zones





Public Consultation

→ External Advice

- New policy formulated
- Internal appointment
- Real engagement > better plans > more accessible to a wider audience

→ Campaign began with newspaper ads, website re-vamped, online map viewer, 800+ stakeholders contacted directly

→ IN ADDITION to existing approach of local meetings

→ www.coillte.ie/forests/plans



coillte



Are you interested in our plans for a forest near you?

Coillte, the forestry and forest products company, is about to update its forest management plans and would like to hear your views.

You can see our current plans for the forests under review, together with detailed maps and a brief description of these forests and how we manage them at:

www.coillte.ie/forests/plans

Please use this website to make submissions on the forest areas of interest to you.

Alternatively, send your comments to

Email: consultation@coillte.ie

Post: FMP Consultation
Coillte
Dublin Road
Newtownmountkennedy
Co. Wicklow

We will conduct further consultation on the draft plans, once completed. Further information on this phase will be available on our website and in local papers in the run up to locally based consultation events.

6 October 2009

15



Consultation Phases





Public map viewer



Coillte - mapClient - Microsoft Internet Explorer

Address: http://forest.map-server.de/coillte/initParams.do

coillte mapClient

Themes Search Legend Help Contact Restart

Legend - Coillte

- Coillte Properties
- Coillte Management Units
- Fell Year
 - Pre 2011
 - 2011 - 2015
 - 2016 - 2020
 - After 2020
- Coillte Forest Boundaries
- County Boundary
- Sea
- Discovery Series

Reload map

Coordinates: 292646.69, 132849.26

Scale: 1:10.296

Projection: Irish National Grid (TM65)

Taskbar: Start, Coillte Forest Managem..., Myles McDonagh's Home..., Coillte: Online Map View..., FMP Review Districts Pro..., Coillte - mapClient - ...



Public input tracking

- Input being sought on issues that should be addressed during planning process
- Feedback also sought on detail of draft plans
- Via web (text only or with map), postal, meetings
- All inputs recorded and brought in to formal system to allow tracking of progress
- Consultee kept informed



Statutory Body Consultation

- Statutory body consultation with Forest Service, NPWS, Fisheries Board and Local Authorities
- Aim to streamline with
 - use of jointly (FS, NPWS, Coillte) approved Appropriate Assessment for SAC's / SPA's
 - Improved electronic means of feedback recording
 - Use mapviewer for viewing areas associated with site listings
- Some changes subject to Statutory Body adoption



Partners with our Customers

- ➔ Committed to work in partnership with our customers and stakeholders to understand their needs and provide innovative and sustainable products and services which excite them
 - to customers and land owners
 - Communities, local authorities, NPWS/Forest Service
 - Dublin Mountain Project
 - Failte Ireland + others – recreation projects
 - 200km sustainable new trails across 38 sites
 - LIFE projects
 - EU – NPWS, Forest Service, Fisheries Board



Responsible Forest Management

- Have developed an integrated planning system
- Coillte now manages 20% of its estate with biodiversity & nature conservation as its primary objective (89,000 ha)
 - Includes
 - SAC
 - SPA
 - NHA
- Range of habitats from forests to sand dunes
- Opportunity to seek projects/funds/partners for future restoration projects in these areas?
 - LIFE Nature, InterReg, Framework Programme, Heritage Grant, Others?



Conclusion

- ➔ Coillte will continue to
 - Manage its estate responsibly
 - (Certified by FSC since 2001)
 - Supply Irish certified timber in a sustainable manner to Irish, UK and continental European markets
 - Deliver on nature conservation objectives
 - Welcome all visitors to our estate according to the leave no trace principles
 - Seek partners for restoration projects in the most sensitive areas



coillte

Restoring Priority Woodland Habitats in Ireland



Coillte acknowledges the funding received from the EU LIFE-Nature programme

6 October 2009

LIFE05 NAT/IRL/000182
www.woodlandrestoration.ie

23