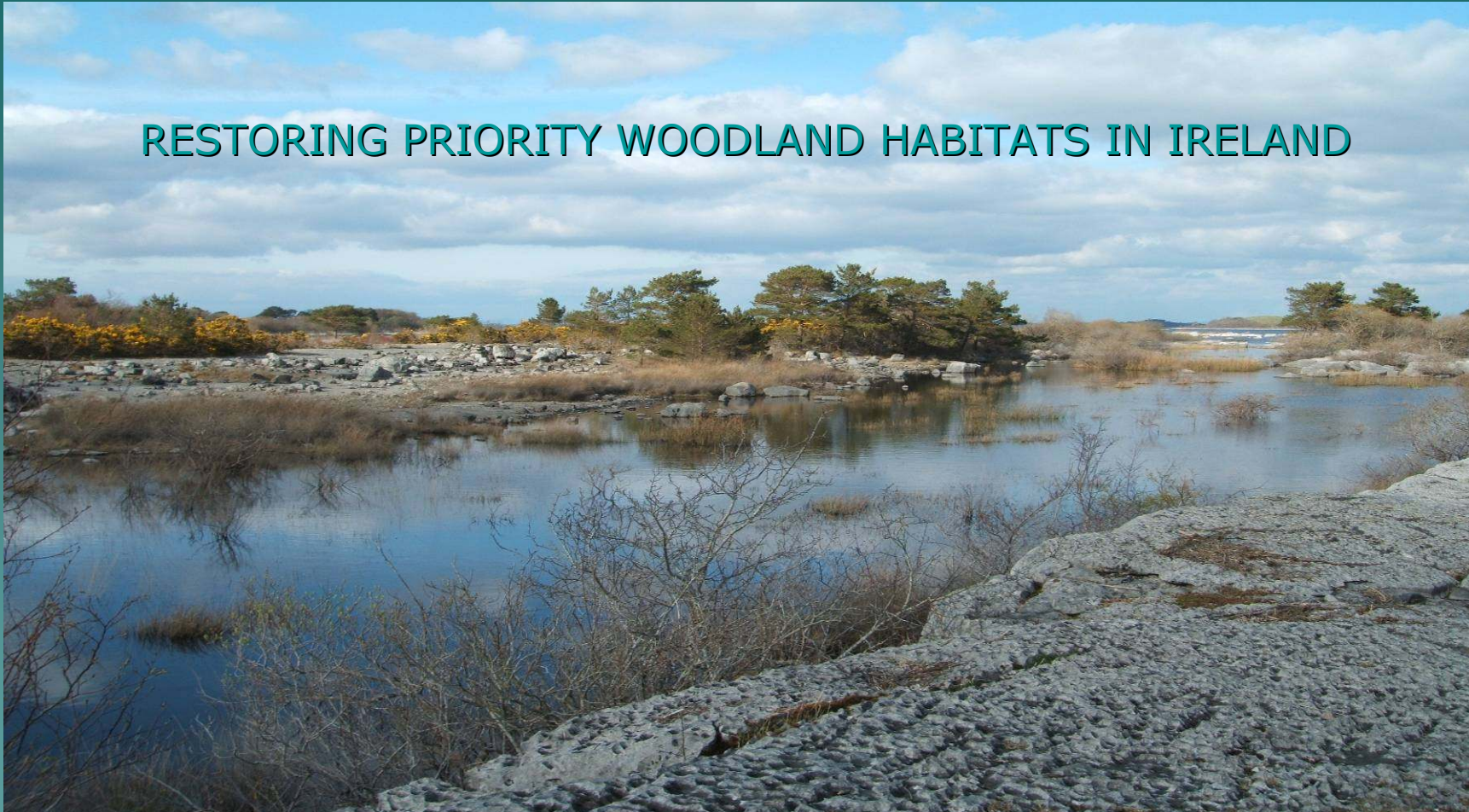


# THE LIFE PROJECT

RESTORING PRIORITY WOODLAND HABITATS IN IRELAND



LOCAL STAKEHOLDERS PERSPECTIVE

# HOW WELL DO ANY LOCALS KNOW THEIR OWN ENVIRONMENT ?



- ◆ Ballykyne Castle
- ◆ Pigeon Hole
- ◆ Selling the 'Life' message – walks and talks
- ◆ Irish travel directions?!

# IMPORTANCE OF OPENING UP WOODLANDS FOR RECREATION



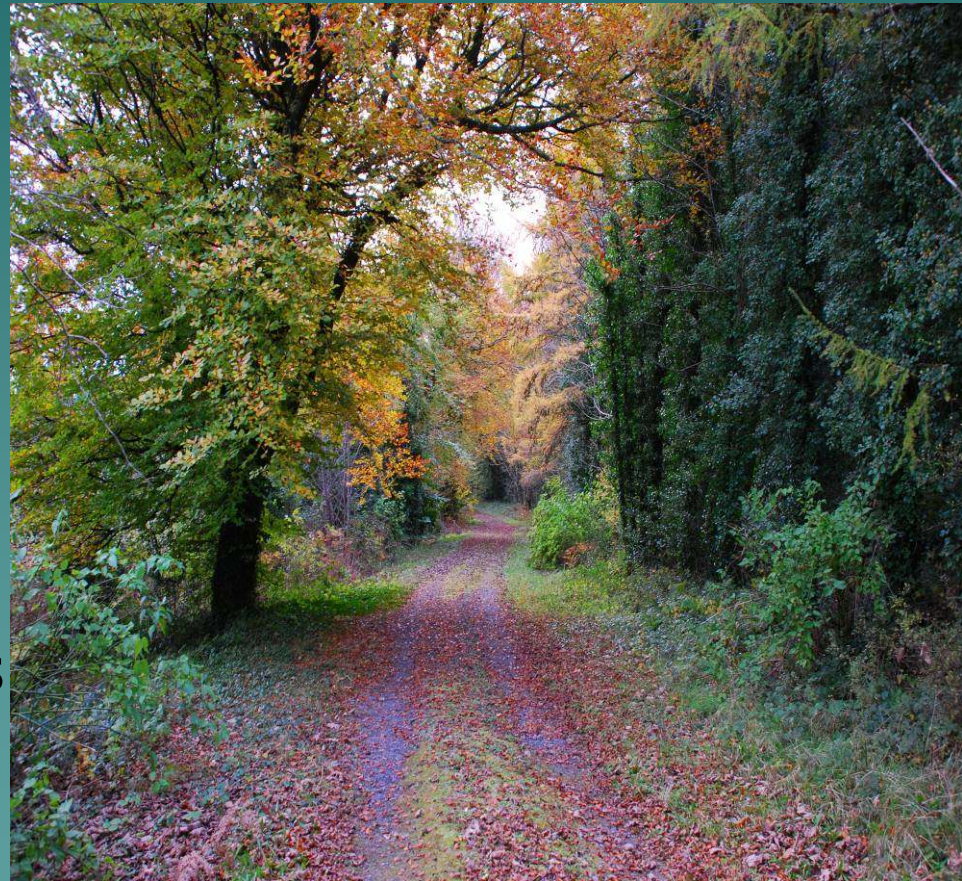
Fly agaric

- ◆ MANY LOCAL PEOPLE WERE AFRAID OF GETTING LOST IN THE WOODS
- ◆ HARD TO MARKET WALKS TO TOURISTS WHEN INFRASTRUCTURE IS NOT IN PLACE
- ◆ IF YOU DON'T KNOW WHATS THERE HOW CAN YOU RESPECT OR PROTECT IT?

# KEY ASPECT - CONSULTATION PROCESS 2006-2009

## 2009

- ◆ Signs ✓
- ◆ Easy to read maps ✓
- ◆ Information brochure/booklet on all aspects of its local history ✓
- ◆ Information sessions for local groups/students ✓



# RECREATIONAL TRAILS



- ◆ Guinness estate viaducts/underpasses built in 1918 for recreational purposes
- ◆ Link Cong/Clonbur together essentially creating a woodland park
- ◆ Create a sense of ownership in two communities

# UNDERLYING GEOLOGY



GLACIAL  
ERRATICS  
SITTING ON  
A BLOCK OF  
FOSSILISED  
LIMESTONE

# GEOMORPHOLOGY



- ◆ UNIQUE PATTERNS OF WEATHERING

- ◆ THE HOLEY ROCKS OF LOUGH MASK ARE VERY RARE



# WEIRD LIMESTONE KARST OF CLONBUR WOOD

- ◆ BOULDERS IN SOCKETS PHENOMENON
- ◆ PROBABLY UNIQUE IN THE WORLD
- ◆ PROTECTION AND CONSERVATION REQUIRED



# UNIQUE BOAT MOORINGS?!



# Botanical Heritage



- ◆ ANCIENT WOODLAND INDICATORS
- ◆ Birds Nest Orchid
- ◆ *Neottia nidus-avis*

# RARE PLANTS

## Yellow Birds Nest Orchid

*Monotropa hopopitys*

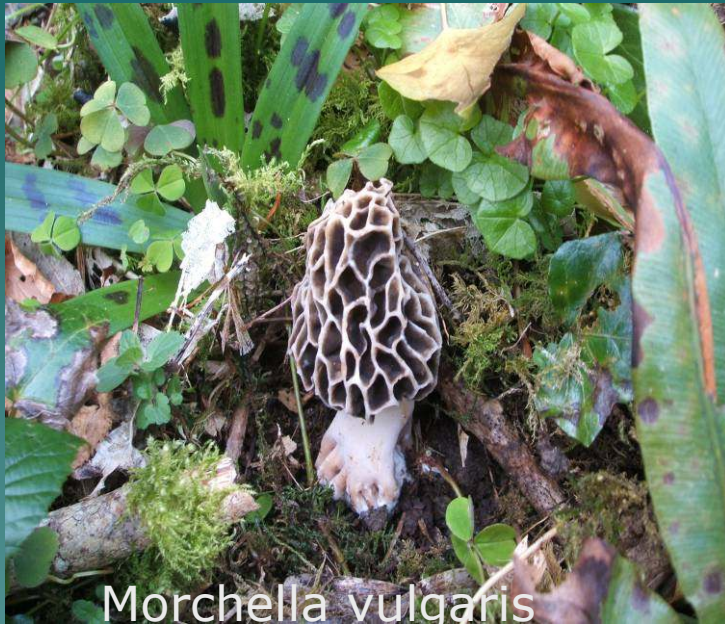


# BOTANY

Broad leaved  
helleborine  
*Epipactis helleborine*



# Rare ferns, fungi and lichens



*Morchella vulgaris*

- ◆ Morel  
*Morchella*
- ◆ Lungwort  
*Lobaria pulmonaria*
- ◆ Adders tongue  
*Ophioglossum*



*Lobaria pulmonaria*

Field work needs to be conducted on all these plant groups as there is no baseline study.

# Ecological diversity



LIFE AREA IN  
PARTICULAR  
SUSTAINS A  
WIDE  
VARIETY OF  
HABITATS

# Ecological Heritage



Bonsai ash trees growing in the grikes



Limestone pavement

# SOIL FORMATION ON BARE LIMESTONE



BLUE GREEN ALGAE (NOSTOC) PLAYS A ROLE



GRADUALLY MOSS AND GRASS CAN BEGIN TO COLONISE AND GROW

# Fauna

- ◆ Red squirrel could be protected from non-native species.
- ◆ It contains almost all species of Irelands bats especially the Lesser horseshoe bat.
- ◆ It has a thriving population of Pine Martens



# What other aspects should be considered

- ◆ Appointment of rangers/wardens
- ◆ Remove any alien species particularly Japanese knot weed
- ◆ Encourage walking and environmental festivals
- ◆ Ongoing education starting with the youngest



# JOYCE COUNTRY GEOPARK



- ◆ LIFE PROJECT AND CONG/CLONBUR WOODLAND SHOULD FORM THE CORNERSTONE OF A BID TO HAVE THIS AREA GRANTED GEOPARK STATUS

# IS THERE AN AFTER 'LIFE'



- ◆ GEOPARK STATUS WILL SUSTAIN THE WORK OF THE LIFE PROJECT
- ◆ CREATE A RESEARCH COMMUNITY
- ◆ BENEFIT THE AREA ECONOMICALLY